

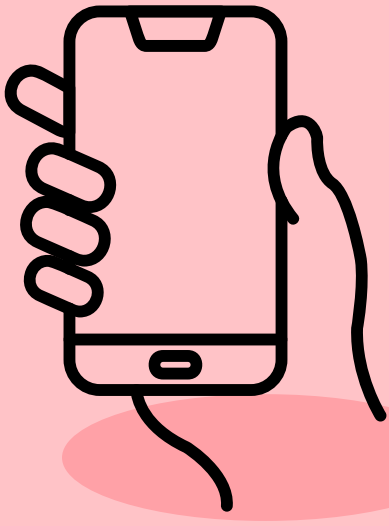


# COMPASS APP



If you need help using the App, please check Compass online Support & FAQ pages before contacting the College, they are full of great tips!


Guide for parents & families



[compass.education/guide](https://compass.education/guide)


Did you know...

You can sign in to the Compass App with your mobile number



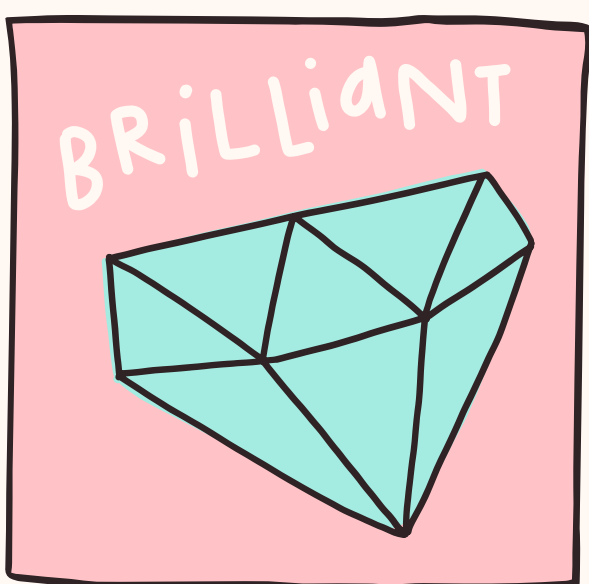
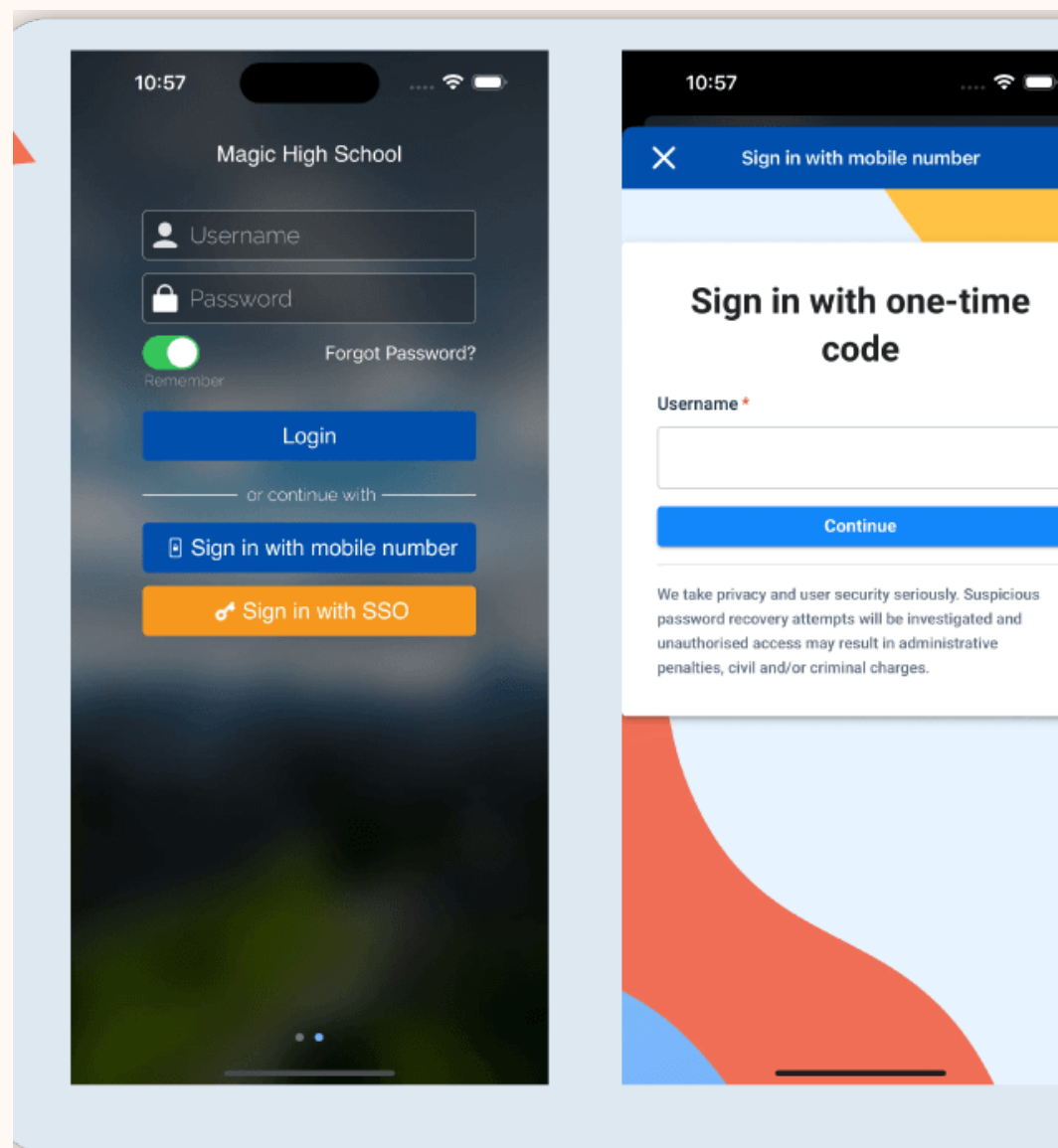
Parent & Carers FAQ

[compass.education/support/parent-faq](https://compass.education/support/parent-faq)

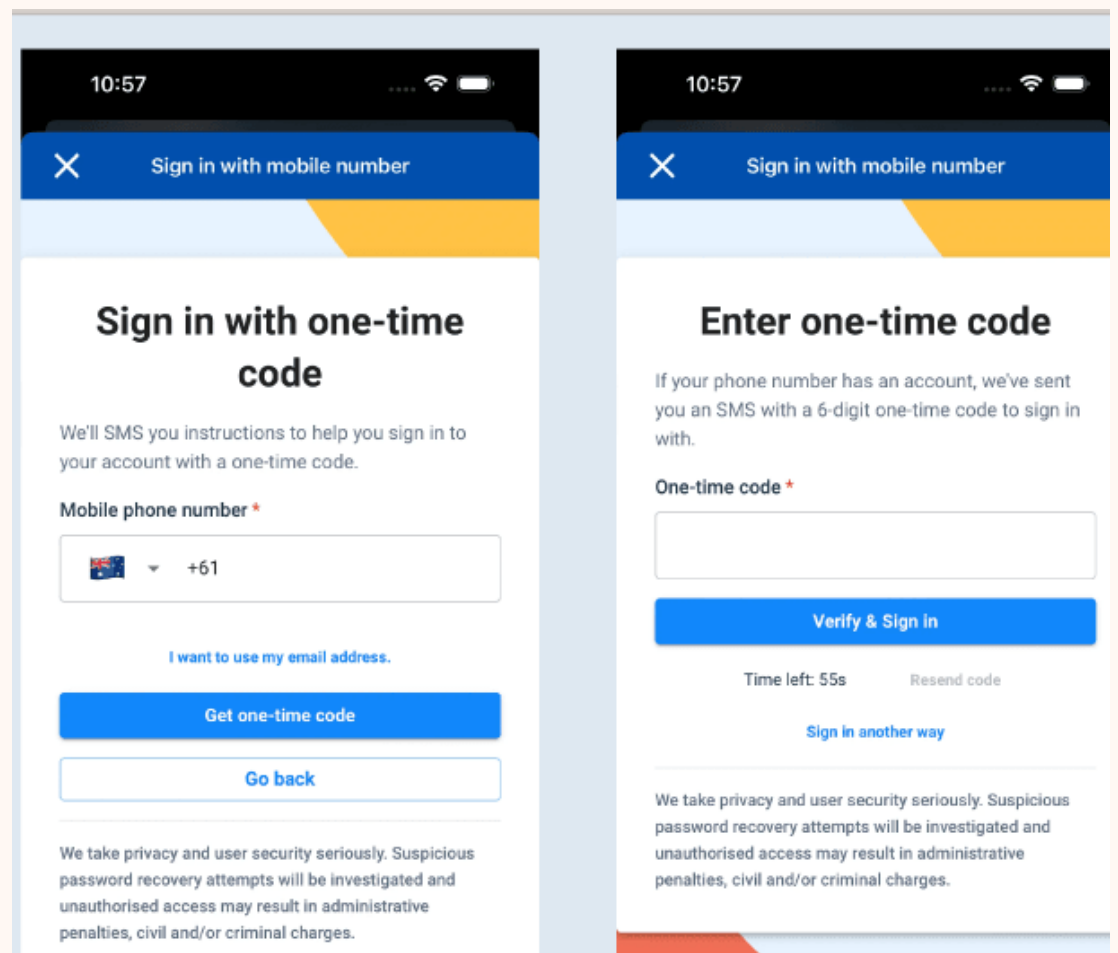
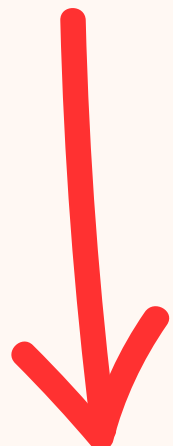


Information about:

- passwords/username
- contact details
- making payments
- student reports



Details here



[compass.education/post/feature-update-otp-login-for-mobile-app](https://compass.education/post/feature-update-otp-login-for-mobile-app)